



# ABTECH SAFETY

PROTECTING YOU AND YOUR TEAM

2021



# ABOUT US

Abtech Safety Ltd incorporated in 1991 employs a knowledgeable and motivated team. With an emphasis on training and personal development staff members are encouraged to continually add to their awareness and experience. Members of the team have worked within the safety industry for many years with detailed knowledge of Fall Protection, Confined Space Work and Rescue Systems. The company ethos is for continual improvement of quality and service to the customer whilst maintaining product development.

The company specialises in Height Safety, Access, Confined Space Systems and Rescue Equipment. Products sell worldwide to a customer base, which includes Government bodies, utilities and high profile companies.

The company provides to customers:

Design and development services and technical advice.

Bespoke training.

The continual development of products and services.

High quality equipment and service.

Value for money.

Products manufactured within ISO9001 quality assurance system.

All products, where necessary, are approved to the relevant

European Standards (CE).

Products manufactured in house

## THE GROUP



Outreach Rescue is a training company that provides industrial training courses and specialist rescue training courses for the emergency services. The range of courses is large but includes Confined Space, Work at Height, Water Awareness, Rope Rescue, Water Rescue, Specialist Rescue, Search Management, Bariatric Rescue and Recovery, Heavy Lift and Powered Boat for Rescue Response.

Outreach Rescue have provided professional training for over twenty five years. Outreach Rescue employ full time instructors who have all the relevant qualifications and have many years of practical experience. Outreach Rescue also provide highly qualified Industrial Safety Teams that will provide technical support and monitor safety systems.

[www.outreachrescue.com](http://www.outreachrescue.com)



ORMS is a medical training company and provider of medical cover for events.

The medical training courses range from basic first aid to a Paramedic Degree course approved by Health and Care Professional Council and is affiliated to Robert Gordon University.

ORMS is also able to offer other services that support organisations and individuals. These range from consultancy on clinical governance and clinical systems through to external verification and evaluation of service delivery.

ORMS provides medical cover services for sports and events such as:

Welsh Rugby Union, Football Association Wales, Snowdonia Marathon, Wales Rally GB, Motorcycle track days, National Armed Forces Day, BBC Proms in the Park, Llandudno Air Show, Anglesey Agricultural Show, Community Events and Television and Film set Cover.

[www.orms247.com](http://www.orms247.com)

# CONTENTS

CONNECTORS	4 - 5	CONNECTORS
INDUSTRIAL HARNESSSES	6 - 7	INDUSTRIAL HARNESSSES
LANYARDS	8 - 9	LANYARDS
LANYARDS	10 - 11	SLINGS
HARNESS KITS	12 - 13	HARNESS KITS
TECHNICAL HARNESSSES	14 - 15	RESCUE ACCESSORIES
WORK POSITIONING	16 - 17	WORK POSITIONING
ROPE	18 - 19	BAGS
EDGE PROTECTION	20 - 21	ROPE DEVICES
RIGGING	22 - 23	PULLEYS
WEBBING FALL ARREST DEVICES	24 - 25	FALL ARREST DEVICES
FALL ARREST & AUTO DESCENT	26 - 27	WINCHES
BRACKETS	28 - 29	BRACKETS
TRIPODS	30 - 31	TRIPODS
TRIPOD KITS	32 - 33	TRIPOD KITS
TRIPOD BAGS	34 - 35	DEVICE BAGS
STRETCHERS	36 - 37	STRETCHERS
STRETCHERS	38 - 39	STRETCHERS
STRETCHERS	40 - 41	STRETCHERS
LIFTING BRIDLES	42 - 43	SPINAL SPLINTS
HORIZONTAL SYSTEMS	44 - 45	PULLEY SYSTEMS
SPECIALIST SYSTEMS	46 - 47	LADDERS
DAVIT ARMS	48 - 49	ANALOG DAVIT
DAVIT BASES	50 - 51	DAVIT BASES
BARREL MOUNTS	52 - 53	BARREL MOUNT KITS
BARREL MOUNTS	54 - 55	COUNTERWEIGHT KITS
DAVIT SYSTEMS	56 - 57	DAVIT SYSTEMS
ANCHORS	58 - 59	TUFF STEPS
THE EXOSPHERE	60 - 61	THE EXOSPHERE 4X4
HOW TO ORDER	62 - 63	ACCREDITATIONS
TERMS & CONDITIONS	64 - 65	TERMS & CONDITIONS

# CONNECTORS



GOZ07 - Oval Maillon

Minimum Breaking Strength 25kN

Maximum Gate Opening 16mm

Certified to EN362

£3.95



DZ10 - Delta Maillon

Minimum Breaking Strength 45kN

Maximum Gate Opening 12mm

Certified to EN362

£6.89



PPESCZ10 - Semi Circular Maillon

Minimum Breaking Strength 45kN

Maximum Gate Opening 10mm

Certified to EN362

£9.85



PPEPZ10 - Pear Shaped Maillon

Minimum Breaking Strength 36kN

Maximum Gate Opening 20.5mm

Certified to EN362

£10.86



KL202SG - Klettersteig Screwgate

Minimum Breaking Strength 50kN

Maximum Gate Opening 26mm

Certified to EN362

£13.04



S2046 - Small Snap Hook

Minimum Breaking Strength 25kN

Maximum Gate Opening 20mm

Certified to EN362

£10.42



# CONNECTORS



KH311TL - Oval Twistlock  
Minimum Breaking Strength 25kN  
Maximum Gate Opening 18mm  
Certified to EN362

£10.07



KH311 - Oval Screwgate  
Minimum Breaking Strength 25kN  
Maximum Gate Opening 18mm  
Certified to EN362

£5.62



C853 - BOA Twistlock  
Minimum Breaking Strength 40kN  
Maximum Gate Opening 24mm  
Certified to EN362

£24.99



C842 - Rescue Screwgate  
Minimum Breaking Strength 45kN  
Maximum Gate Opening 25mm  
Certified to EN362

£19.72



KH407 - Scaffold Twistlock  
Minimum Breaking Strength 35kN  
Maximum Gate Opening 53mm  
Certified to EN362

£24.57



SSE/SSH - Scaffold Snap Hook  
Minimum Breaking Strength 30kN  
Maximum Gate Opening 65mm  
Certified to EN362

£22.22

# INDUSTRIAL HARNESSSES



AB10 - Single Point Harness

Rear 'D' Attachment Point

Small 32"-37" Chest (AB10-SML)  
Standard 38"-45" Chest (AB10-STD)  
Large 46"-58" Chest (AB10-XL)

£33.54

Certified to EN361



AB20 - Two Point Harness

Rear 'D' & Chest 'D' Attachment Point

Small 32"-37" Chest (AB20-SML)  
Standard 38"-45" Chest (AB20-STD)  
Large 46"-58" Chest (AB20-XL)

£43.42

Certified to EN361



AB20SL - Two Point Harness

Rear 'D' and Chest Soft Loop Attachment Point

Small 32"-37" Chest (AB20SL-SML)  
Standard 38"-45" Chest (AB20SL-STD)  
Large 46"-58" Chest (AB20SL-XL)

£42.31

Certified to EN361



# INDUSTRIAL HARNESSSES



## ABRES - Rescue Harness

Rear 'D' & Chest 'D' Attachment Point.  
Overhead 'D' for lifting and lowering

Small 32"-37" Chest (ABRES-SML)  
Standard 38"-45" Chest (ABRES-STD)  
Large 46"-58" Chest (ABRES-XL)

£48.00

Certified to EN361, EN1497



## ABRESHV - Hi Vis Rescue Harness

Rear 'D' & Chest 'D' Attachment Point.  
Overhead 'D' for lifting and lowering

Small 32"-37" Chest (ABRESHV-SML)  
Standard 38"-45" Chest (ABRESHV-STD)  
Large 46"-58" Chest (ABRESHV-XL)

£53.85

Certified to EN361, EN1497



## ABJ-Y

Hi Vis Jacket with opening for harness  
attachment points.

Velcro loops for fixing in harness.

Also available in Orange (ABJ-O)

Certified to EN471

£17.70

# LANYARDS



ABRST - Restraint Lanyard

Complete with 2 x KH311  
(other lengths and connectors  
are available to order)

Certified to EN358, EN354

ABRST50 - 0.50m

£20.00

ABRST100 - 1.0m

£20.77

ABRST150 - 1.5m

£21.54

ABRST200 - 2.0m

£22.31



ABRSTADJ - Adjustable Restraint Lanyard

Complete with 2 x KH311

Adjusts from 1.25m to 1.75m

Certified to EN358

£32.31



ABL2.0 - 2m Fall Arrest Lanyard

Complete with 2 x KH311

Shock Absorbing pack to minimise forces

Certified to EN355

£37.46



# LANYARDS



ABL2.0SH - 2m Fall Arrest Lanyard

Complete with 1 x KH311 & 1 x SSE/SSH

Shock Absorbing pack to minimise forces

Certified to EN355

£53.85



ABLTW1.5 - 1.5m Twin Fall Arrest Lanyard

Complete with 3 x KH311

Shock Absorbing pack to minimise forces

Certified to EN355

£58.46



ABLTW1.5SH - 1.5m Twin Fall Arrest Lanyard

Complete with 1 x KH311 & 2 x SSE/SSH

Shock Absorbing pack to minimise forces

Certified to EN355

£73.10

# LANYARDS



ABLRSST - Combi Lanyard

Complete with 3 x KH311

Can be used for Fall Arrest or Restraint

Certified to EN358, EN355

£52.46



ABSRL1.5SH - 1.5m Fall Arrest Rope Lanyard

Complete with 1 x KH311 & 1 x SSE/SSH

Shock Absorbing pack to minimise forces

Certified to EN355

£93.69



ABTRL1.25SH - 1.25m Twin Fall Arrest Lanyard

Complete with 1 x KH311 & 2 x SSE/SSH

Shock Absorbing pack to minimise forces

Certified to EN355

£168.23



# SLINGS



Round Sling  
25mm Webbing  
(other lengths are available)  
Certified to EN795 CLASS B

AB40R - 0.40m £6.92

AB120R - 1.2m £8.46

AB200R - 2.0m £9.23

AB240R - 2.4m £10.00



Anchor Sling  
Hi Vis c/w KH311  
(other lengths are available)  
Certified to EN795 CLASS B

AB100HV - 1.0m £16.92

AB150HV - 1.5m £17.69

AB200HV - 2.0m £18.46



Wire Sling  
c/w Plastic Cover  
(other lengths are available)  
Certified to EN795 CLASS B

WS100 - 1.0m £19.14

WS150 - 1.5m £20.86

WS200 - 2.0m £23.74

# HARNESSES KITS



## AB10KIT - Working @ Height Kit 1

Single Point Harness, 2m Fall Arrest Lanyard with Scaffold Hook and Kit Bag

Contains: AB10, ABL2.0SH, ABBAG

Certified to EN361, EN355

£95.08



## AB20SLKIT - Working @ Height Kit 2

Two Point Harness, 2m Fall Arrest Lanyard with Scaffold Hook and Kit Bag

Contains: AB20SL, ABL2.0SH, ABBAG

Certified to EN361, EN355

£103.59



## AB20LTW - Working @ Height Kit 3

Two Point Harness, 1.5m Twin Fall Arrest Lanyard with Scaffold Hooks and Kit Bag

Contains: AB20, ABLTW1.5SH, ABBAG

Certified to EN361, EN355

£123.34

# HARNESS KITS



## AB10ADJ - Access Platform Kit

Single Point Harness, Adjustable Restraint Lanyard c/w Karabiners and Kit Bag

Contains: AB10, ABRSTADJ, ABBAG

Certified to EN361, EN358

£74.19



## COMBI - Combination Harness Kit

Single Point Harness, Fall Arrest / Restraint Lanyard c/w Karabiners and Kit Bag

Contains: AB10, ABLRST, ABBAG

Certified to EN361, EN358, EN355

£93.73



## AB10/2.4T - Fall Arrest Kit

Single Point Harness, 2.4m Webbing Fall Arrest and Kit Bag

Contains: AB10, AB2.4T, ABBAG

Certified to EN361, EN360

£110.27



# TECHNICAL HARNESSSES



## ABELITE - Access Elite Harness

Breathable jacket and quick connect leg buckles for ease of donning.

c/w 30cm rear extension for use with BA

Certified to EN361

£111.60



## ABPRO - Access Pro Harness

Rear and Thoracic attachment. Ventral and Side Links for Work Positioning

Shoulder, Waist and Leg Pads

Certified to EN361, EN1497, EN813

£172.31

# RESCUE ACCESSORIES



## ABNAP - Rescue Nappy

Loops positioned to enable lifting adults or children

Tested to EN1497

£62.00



## ABLSS - Leg Suspension Strop

Designed to hold a person in a vertical position after a fall, enabling them to stand

c/w Connector

Not PPE

£18.46

# WORK POSITIONING



ABPS -Pole Strap

2m 16mm Rope c/w Manual Grab and Karabiners

Certified to EN358

£61.54



ABRAT - Rope Rat

Adjustable Work Positioning Lanyard c/w Hook and protective cover

2m Long (available in 5m & 10m Lengths)

Certified to EN358

£120.00



# WORK POSITIONING



ABBS - Bosuns Seat

For a seated position when in a full body harness with belt and side 'D's

Not PPE

£45.00



ABBC - Bosuns Chair

For a seated position when in a full body harness

Complete with foot rest and tool pockets

Not PPE

£252.00

# ROPE



LR/11 - 11mm Static Rope  
Polyamide core and sheath  
34kN  
Certified to EN1891 Type A

LR/11/1 - 1m

£1.92

LR/11/50 - 50m

£92.31

LR/11/100 - 100m

£184.62

LR/11/200 - 200m

£369.23



F8  
Heat Shrunk Fig.8 and KH311  
18kN

£12.92



ABR - 16mm Rope  
Nylon c/w Plastic Eyes  
Certified to EN358

ABR5 - 5m

£58.41

ABR10 - 10m

£74.37

ABR15 - 15m

£90.32

ABR20 - 20m

£106.25

# BAGS



ABBAG - Kit Bag

Kit bag for holding Harness and Lanyard. Zip compartment and padded shoulder straps.

£10.63



Rope Bag

Roll Top with Stealth Buckle

Two Shoulder Straps

Drainage Hole in Base

ABSRBAG - 50m

£53.30

ABMRBAG - 100m

£55.57

ABLRBAG - 150m

£58.98

ABXLRBAG - 200m

£62.39



# EDGE PROTECTION



ER100-4

Edge Roller - batch of 4 modules linked with maillons

Can connect modules together

Not PPE

£105.00



CRP70 - Canvas Rope Protector

Velcro edge to create a tube for rope to pass through

Not PPE

£28.85



EPPLUS - Ribbed Edge Protection

Reinforced strips for extra rope protection

Eyelets for anchoring

Not PPE

£64.62

# ROPE DEVICES



RP209 - Rope Grab

Can be removed at any point on the rope. 10.5-13mm Rope

Certified to EN353-2

£63.86



ABRP - Rope Grab (Manual)

16mm Rope

Certified to EN358

£38.46



RP220 - Ascender (RH)  
(LH available)

9-13mm Rope

Certified to EN567

£79.38



RP881 - D4 Pro Descender  
(no panic brake)

11-13mm Rope

Certified to EN12841

£168.33



RP880 - D4 Descender  
(c/w panic brake)

11-13mm Rope

Certified to EN12841

£168.33

# RIGGING



RP705 - Capture Pulley

One Way Locking Progress Capture Pulley

10 - 13mm Rope

Certified to EN567

£179.99



RP500 - Rocker

Rocker Work Positioning Device

10.5 - 12.7mm Rope

Certified to EN353-2, EN358, EN12841-A

£76.52



Rigging Plates

Small, Medium & Large

High Strength Aluminium

20mm Dia. Attachment Holes

RP300 - 36kN

£20.45

RP310 - 40kN

£32.13

RP320 - 45kN

£66.73



# PULLEYS



RP012 - Single Pulley

Max. 13mm Rope

Min Breaking Strength 36kN

Certified to EN12278

£20.11



RP030 - Small Double Pulley

Max. 13mm Rope

Min Breaking Strength 36kN

Certified to EN12278

£47.09



RP034 - Double End Pulley

Max. 13mm Rope

Min Breaking Strength 36kN

Certified to EN12278

£34.59



RP033 - Double Pulley

Max. 13mm Rope

Min Breaking Strength 36kN

Certified to EN12278

£53.70



RP066 - Stainless Pulley

Max. 16mm Rope

Min Breaking Strength 50kN

Certified to EN12278

£100.92



RP700 - Large Double Pulley

Max. 13mm Rope

Min Breaking Strength 30kN

Certified to EN12278

£118.17

# WEBBING FALL ARREST DEVICES



AB2.4T

2.4m Webbing Fall Arrest Device

Swivel Indicator and Snap Hook

Certified to EN360, ANSI Z359.1

£69.51



AB2.4TTW

2.4m Twin Webbing Fall Arrest Device

Swivel Indicator and Snap Hooks

Tested to EN360 (each of the two units is tested and certified to EN360)

£140.31



Webbing Fall Arrest Device

Plastic Housing

Indicator Hook

Certified to EN360

ABRL03W - 3m Webbing

£102.75

ABRL06W - 6m Webbing

£118.56

# FALL ARREST DEVICES



15m Fall Arrest Device  
5mm Galvanised Cable  
AB15T Swivel Anchor Eye and Indicator Hook  
Certified to EN360  
ANSI Z359.1

£495.55

15m Fall Arrest Winch  
5mm Galvanised Cable  
AB15RT Swivel Anchor Eye and Indicator Hook  
Can be used for Fall Arrest or as a Winch  
Certified to EN360, EN1497  
ANSI Z359.1



£727.94



Fall Arrest Device  
Swivel Anchor Eye  
Indicator Hook  
Certified to EN360

ABRL06 -  
6m Galvanised Cable

£269.22

ABRL10 -  
10m Galvanised Cable

£319.44

ABRL20 -  
20m Galvanised Cable

£468.03

# FALL ARREST & AUTO DESCENT



AB30T

30m Fall Arrest Device

5mm Galvanised Cable

Certified to EN360

£798.00



AB30RT

30m Fall Arrest Recovery Winch

5mm Galvanised Cable

Certified to EN360, EN1496

£1197.00



HAS18/IKV17

18m Fall Arrest / Auto Descender  
c/w Connector for hanging.

5mm Galvanised Cable

Certified to EN360, EN341, EN364

£1397.71



# WINCHES



18561

27m Man Riding Winch

WLL - 205kg

Certified to EN1496

£2758.77



60005

30m Man Riding Winch

WLL - 141kg (282kg reeved)

Certified to EN1496

£1622.26



60011

45m Man Riding Winch

WLL - 141kg (282kg reeved)

Certified to EN1496

£2340.94



60257

30m Materials Winch

WLL - 315kg

Not PPE

£641.08

# BRACKETS



T05T  
AB15RT to Tripod

£96.57



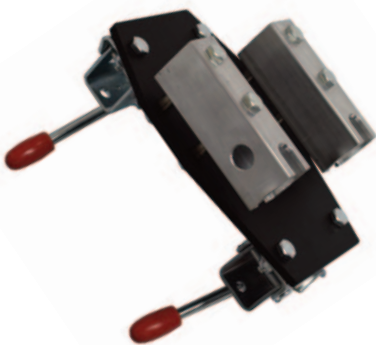
601762  
AB15RT to Davit  
(also requires 60209 bracket on the davit)

£136.12



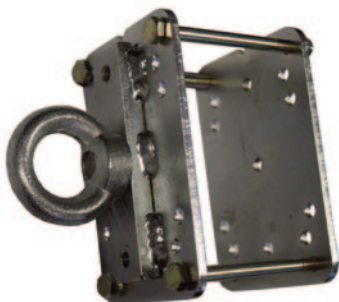
ALKO  
Tripod Clamp

£20.19



T05TW2  
60005 / 60257 to Tripod

£153.85



60141/EYE  
Davit Anchor Eye

£106.06

# BRACKETS



60209

Davit Bracket

£166.56



60294

Analog Davit Bracket

£151.11



T05T-30

AB30RT to Tripod

£131.31



T05T-30D

AB30RT to Davit

£137.04



ABDR-KIT

Winch Davit Reeve Kit (for use with 60209)

£86.86

# TRIPODS



T3

Two Person Tripod. 3 Overhead Pulleys, 3 Underslung Eyes.  
Telescopic Legs

Leg Span 110cm - 170cm. Height 140cm - 240cm

£679.00

Certified to EN795 Type B



# TRIPODS



RT3

Two Person Rescue Tripod. 3 Overhead Pulleys, 3 Underslung Swivel Eyes. Detachable Telescopic Legs

Leg Span 130cm - 200cm. Height 200cm - 260cm

Certified to EN795 Type B

£823.08

# TRIPOD KITS



## CST1KIT

Confined Space kit with 15m Fall Arrest Winch

Contains: T3, AB15RT and T05T

Certified to EN795 Type B, EN360, EN1496

£1420.00

*If you require your kit with an RT3 instead of a T3 Tripod, amend code to CSRT\*KIT*

*ADD (to kit)*

£150.00



## CST2KIT

Confined Space kit with 15m Fall Arrest Winch and Rescue Harness

Contains: T3, AB15RT, T05T and ABRES

Certified to EN795 Type B, EN360, EN1496, EN361, EN1497

£1459.80



## CST3KIT

Confined Space kit with 27m Man Riding Winch

Contains: T3, 18561 and ALKOS

Certified to EN795 Type B, EN1496

£3470.00

# TRIPOD KITS



## CST4KIT

Confined Space kit with 27m Man Riding Winch and Rescue Harness

Contains: T3, 18561, ALKOS and ABRES

Certified to EN795 Type B, EN1496, EN361, EN1497

£3509.80



## CST5KIT

Confined Space kit with 30m Man Riding Winch

Contains: T3, 60005 and T05TW

Certified to EN795 Type B, EN1496

£2436.00



## CST6KIT

Confined Space kit with 30m Man Riding Winch and Rescue Harness

Contains: T3, 60005, T05TW and ABRES

Certified to EN795 Type B, EN1496, EN361, EN1497

£2475.80

# TRIPOD BAGS



T07

Tripod Carry Bag  
c/w Velcro securing straps

£84.62



RT07

Rescue Tripod Carry Bag  
c/w Velcro securing straps

£92.31



# DEVICE BAGS



## TORQBAG

Carry Bag with Solid base for TORQ Devices

Zip closure and internal velcro straps

£60.00



## WINCHBAG

Carry Bag with Solid base for Winches

Zip closure and internal velcro straps

£60.00



## EU39

Plastic Winch Box with foam inserts

Suitable for storing and shipping

£58.00

# STRETCHERS



SLIX100

Rollable Rescue Stretcher

Colour coded user replaceable straps

Certified to CE 93/42/EEC CLASS 1

£530.77



SLIXVHH

Vertical & Horizontal Positioning Straps for SLIX

Colour coded eyes c/w Maillons

Certified to EN358

£81.89



SLIX100BAG

Rolltop carry bag for SLIX100

Shoulder Straps and front pocket

Not PPE

£55.65

# STRETCHERS



SLIX100KIT

SLIX100 Stretcher c/w Strops and Carry Bag

Contains: SLIX100, SLIXVHH and SLIX100BAG

Certified to CE 93/42/EEC CLASS 1, EN358

£615.00

# STRETCHERS



SLIX100XL

Rollable Rescue Stretcher for Bariatrics

Colour coded user replaceable straps

Certified to CE 93/42/EEC CLASS 1

£840.44



SLIXVHXL / SLIXHHXL

Vertical & Horizontal Positioning Straps for SLIX100XL

Colour coded eyes c/w Maillons

Certified to EN358

SLIXVHXL  
Vertical

£81.89

SLIXHHXL  
Horizontal

£81.89



SLIXBAGXL

Rolltop carry bag for SLIX100XL

Shoulder Straps and front pocket

Not PPE

£61.54



# STRETCHERS



SLIX100XLKIT

SLIX100XL Stretcher c/w Strops and Carry Bag

Contains: SLIX100XL, SLIXVHXL, SLIXHHXL SLIXBAGXL

£981.90

Certified to CE 93/42/EEC CLASS 1, EN358

# STRETCHERS



SLIXRR

Rapid Response Stretcher c/w Carry Bag

Carry handles and top eyelet for drag lines

Certified to CE 93/42/EEC CLASS 1

£320.00



SLIX50COM

SLIX50 combined with integral Spinal Splint and Carry Bag

Articulated skirt for tight confined spaces

Certified to CE 93/42/EEC CLASS 1

£1051.60



RS100

Rollable Rescue Stretcher Kit in Carry Bag

Contains: Lifting Sling and connectors

Not PPE

£520.00

# STRETCHERS



ST/044

Basket Stretcher

Dimensions 217x62x18.5cm - 13.5kg

Load Capacity 278kg

£852.07

# LIFTING BRIDLES



SPALB

Stretcher Positioning Strops

c/w Connectors

Not PPE

£132.20



ABSS

Adjustable Stretcher Positioning Strops  
c/w connectors

520mm - 1880mm

Certified to EN358

£121.05



SLIXWS

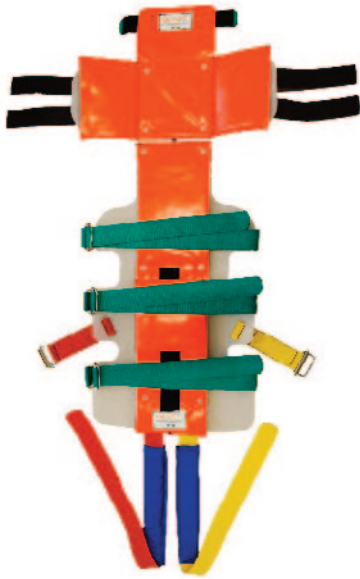
Wire Stretcher Anchor Strops. Colour Coded  
for SLIX100

c/w Connectors

Certified to EN795 Type B

£71.17

# SPINAL SPLINTS



SLIXSS

SLIX Spinal Splint. Attaches into SLIX100 and SLIX100XL. Can be used with other stretchers

Complete with Groin straps and Head Pocket for added support

Certified to CE 93/42/EEC CLASS 1

£466.80



EFS102

Spinal Splint

NOT PPE

£216.18



EFS102/2

Spinal Splint with Floatation Aid

NOT PPE

£265.82



# HORIZONTAL SYSTEMS



## HONOR-T

25m Horizontal System c/w 2 x 15m Fall Arrest Devices

Kit for 2 user (can have up to 5 users)

Certified to EN 795/A1 CLASS C, EN360

£2180.00



## ABTL20

20m Horizontal System

For up to 2 Users

Certified to EN795/A1 CLASS C

£231.12

# PULLEY SYSTEMS



## VRS

Vertical Rescue System  
15m Working Length

Pre-Rigged Pulley system and reach pole for rescuing a person suspended in a harness

Certified CE Products used in this system

£675.00



## ABRALF

2 Way Locking Rescue System. 15m Working Length at 5:1

350kg Working Load Limit

Certified CE Products used in this system

£758.50



## VWR1

Vertical Work & Rescue System.  
15m Working Length

Certified CE Products used in this system

£605.00

# SPECIALIST SYSTEMS



## ROOFER KIT

Complete Roofer kit including roof anchor, harness, rope, helmet, lanyard and bag

£438.00

Certified CE Products used in this system



## CONT

Container Safe Kit - for working on top of shipping containers

Contains: Harness, Restraint Kit & Connectors

£494.00

Certified CE Products used in this system

# LADDERS



FLEXIS

Single Flexi Ladder

3m Lengths. Can be connected together

NOT PPE

£100.00



FLEXIH

Ladder Hanger for Double Flexi Ladder

Complete with connectors

NOT PPE

£100.31

FLEXID

Double Flexi Ladder

3m Lengths. Can be connected together

NOT PPE

£161.54

# DAVIT ARMS



30104

Small Upper Davit

28" (711mm) Reach, 54" (1390mm) Height

Certified to EN795 TYPE B

£754.85

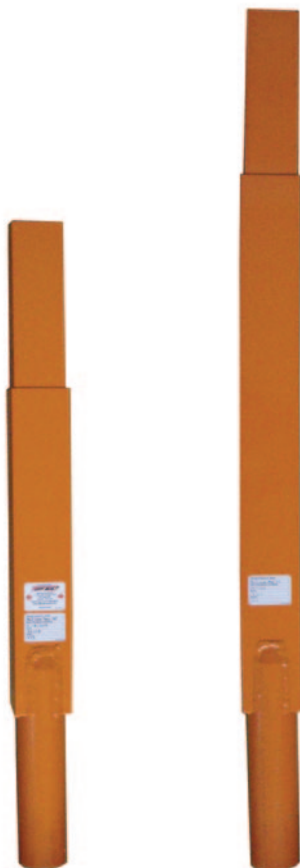
30105

Large Upper Davit

28" (711mm) Reach, 66" (1676mm) Height

Certified to EN795 TYPE B

£1006.47



30108

Small Lower Davit

40" (1016mm) Height

Certified to EN795 TYPE B

£608.08

30109

Large Lower Davit

52" (1320mm) Height

Certified to EN795 TYPE B

£655.26



# ANALOG DAVIT



50028

Analog Davit

72" (1.82m) Reach, 110" (2.79m) Height

£2676.81

Certified to EN795 TYPE B

*\*Pictured with AB15RT device and bracket, not included*

# DAVIT BASES



30031

Floor Mount

Bolt on base for Tuff Davits

Certified to EN795 TYPE B

£404.27



30032

Wall Mount

Bolt on wall mount for Tuff Davits

Certified to EN795 TYPE B

£369.31

# DAVIT BASES



30023

Flush Floor Mount for Tuff Davits

For casting into fresh concrete

Eng. Calc

£377.38



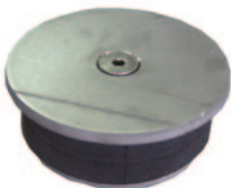
30021

Flush Floor Mount for Tuff Davits

For existing concrete

Certified to EN795 TYPE B

£377.38



30019

Sleeve Cap

Provides a seal over the davit socket when not in use

NOT PPE

£36.75

# BARREL MOUNTS



30036

2.25" (57mm) Barrel Mount

For mounting onto shoring and trench boxes

Certified to EN795 TYPE B

£998.58



30161

5" (127mm) Barrel Mount

For mounting onto shoring and trench boxes

Certified to EN795 TYPE B

£1172.83



30166

7" (181mm) Barrel Mount

For mounting onto shoring and trench boxes

Certified to EN795 TYPE B

£1265.92

# BARREL MOUNT KITS



30036KIT

2.25" Barrel Mount Kit c/w 30105, 30109, 60005, AB15RT and Brackets

For mounting onto shoring and trench boxes

Certified to EN795 TYPE B, EN360, EN1496

£5400.47

30161KIT

5" Barrel Mount Kit c/w 30105, 30109, 60005, AB15RT and Brackets

For mounting onto shoring and trench boxes

Certified to EN795 TYPE B, EN360, EN1496

£5574.72

30161KIT

7" Barrel Mount Kit c/w 30105, 30109, 60005, AB15RT and Brackets

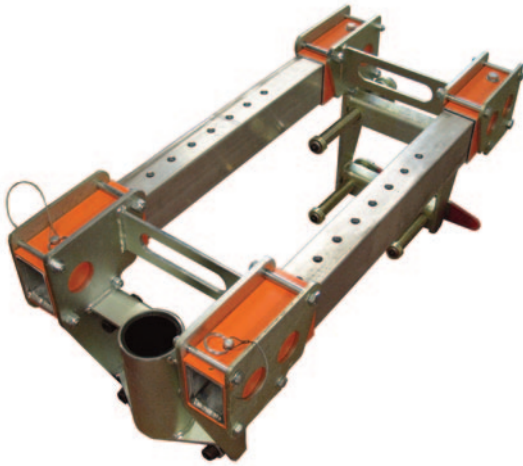
For mounting onto shoring and trench boxes

Certified to EN795 TYPE B, EN360, EN1496

£5667.81



# ADJUSTABLE BARREL MOUNT



30029

2.25" - 25" (57mm - 635mm)  
Adjustable Barrel Mount

For mounting onto shoring and trench boxes

Certified to EN795 TYPE B

£1813.76



30029KIT

Adjustable Barrel Mount Kit c/w 30105,  
30109, 60005, AB15RT and Brackets

For mounting onto shoring and trench boxes

Certified to EN795 TYPE B, EN360, EN1496

£6215.65

# COUNTERWEIGHT KITS



30073

Counterweight Base

Certified to EN795 TYPE B

£2648.36



30073KIT

Counterweight Base c/w 30105, 30109,  
60005, AB15RT, Brackets and 360kg

Certified to EN795 TYPE B, EN360, EN1496

£8498.00



WEIGHT30

2 x 15kg Weight Plates

For use on the Counterweight Bases

£120.71

# DAVIT SYSTEMS



30040KIT

5ft to 10ft Pole Hoist c/w 30m Man Riding Winch

Certified to EN795 TYPE B, EN1496

£4437.00



30070KIT

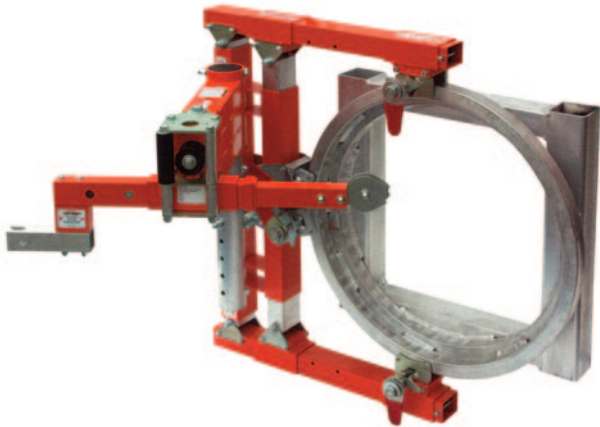
4 Piece Base c/w 30 Man Riding Winch and Bracket

For access into confined spaces

Certified to EN795 TYPE B, EN1496

£5063.90

# DAVIT SYSTEMS



30321/235

Horizontal Entry Clamp and Arm Assembly

For mounting onto tank collars

Certified to EN795 TYPE B

£5835.20



30234/235

Horizontal Entry 72" Post and Arm Assembly  
(Davit Base not included)

For horizontal access and egress

Certified to EN795 TYPE B

£3135.00

# ANCHORS



CT102

Removable Anchor

(20mm Drilled Hole)

Certified to EN795 TYPE B

£145.97



GG201

Concrete Anchor - 330mm Beam

(20mm Drilled Hole)

Certified to EN795 TYPE B

£172.97



CT101

Beam Clamp

Beam Flange Width:  
3.5" - 14" / 87mm - 350mm

Certified to EN795 TYPE B

£196.58



# TUFF STEPS



## TUFF STEPS

Narrow and Wide Step sections that can be joined together to create walkway on flat or inclined surfaces.

Handrails can be added to one or both sides

£POA

# THE EXOSPHERE



## THE EXOSPHERE

Mobile Davit with trailer

Please contact for options and prices

£POA

# THE EXOSPHERE 4x4



THE EXOSPHERE 4x4

Mobile Davit with remote control 4x4 Base

Please contact for options and prices

£POA

# HOW TO ORDER

**ALL ORDERS MUST BE ISSUED IN WRITING BY FAX/EMAIL/POST**

**Fax:** +44(0)1244 837 051

**Email:** sales@abtechsafety.com

**Post:** Abtech Safety Ltd, Unit 1&2 Parkway Business Centre, Deeside Industrial Park, CH5 2LE

**Office Hours:**

Monday to Thursday - 9am to 5pm

Friday - 9am to 2:30pm

All orders will be issued to account holders only. If you do not have an account you can request an application for credit via the above methods of contact. Alternatively you can request for a proforma invoice, which must be paid in full before the despatch of any goods.

MINIMUM ORDER QUANTITY £25.00 before carriage and VAT

**UK DELIVERY**

Orders received before 12pm will be sent next day before 5:30pm delivery subject to availability and account status.

Timed delivery is available at a surcharge and subject to availability and account status.

We are not open to the general public nor do we operate a Trade Store. If you do, however wish to collect an order, please specify on your PO and we will contact you to make arrangements

**PAYMENT**

**Account Holders**

Details of payment accounts will be specified on your invoice.

**Other forms of Payment:**

Please inform us on your PO if you wish to use either of the following methods

**Credit/Debit Card** - Most cards accepted

**Cheque** - Made payable to Abtech Safety Ltd

**VAT No.** 595703115      **Co. Reg** 2656103



# ACCREDITATIONS

## **BS EN ISO9001:2015--- Quality Management System**

The Quality Management System maintained by Abtech Safety Limited is recognised as the highest quality system available. All products manufactured and serviced by the company are included within this system. The system is audited by independent auditors at regular intervals. All PPE products are in conformity with the provision of the PPE Regulation (EU) 2016/425 under the supervision of the notified body: Satra Quality Assurance Ltd. Rockingham Rd, Kettering, Northampton NN16 9JH.

## **CE Marking and Product Conformance**

In accordance with the PPE Regulation (EU) 2016/425, Module B (Annex V) EU Type Examination and Module C (Annex VI), Module D (Annex VIII) all products designed and manufactured by Abtech Safety Limited classified as Personal protection equipment are independently tested to the relevant European Standard. All PPE products conform to the European Standards stated and are subject of EC Certification of Conformity issued by: SATRA Technology Europe Ltd (Ireland)Bracetown Business Park, Clonee, Co. Meath, D15 YN2P, Ireland (NB2777)



- EN 341 : 2011 Descender Devices for Rescue
- EN 353-2 : 2002 Guided Type Fall Arresters On A Flexible Line
- EN 354 : 2010 Lanyards
- EN 355 : 2002 Energy Absorbers
- EN 358 : 2018 Belts & Lanyards for Work Positioning and Restraint
- EN 360 : 2002 Retractable Type Fall Arrestors
- EN 361 : 2002 Full Body Harnesses
- EN 362 : 2004 Connectors
- EN 567 : 2013 Rope Clamp
- EN 795-TYPE B : 2012 Temporary Anchor Devices
- EN 813 : 2008 Sit Harnesses
- EN 1496 : 2017 Rescue Lifting Devices
- EN 1497 : 2007 Rescue Harnesses
- EN 1891 - TYPE A : 1998 Low Stretch Kernmantle Rope
- EN 12278 : 2007 Pulleys
- EN 12492 : 2012 Helmets for Mountaineers



# TERMS & CONDITIONS

## 1. Conditions.

All goods are sold subject to the following conditions which apply to the exclusion of any conditions of order or purchase of the customer or any other standards, specifications or particulars of or adopted by the customer. No amendment, alteration or attempt to override these conditions shall be binding on Abtech Safety Ltd ('the company') unless confirmed in writing by a director of the company.

## 2. Price.

The price for goods sold by the company shall be the ruling price (less any agreed discount) in force on the date when the goods are despatched. All prices are ex-works and exclusive of VAT.

## 3. Delivery.

We will try to ensure delivery of the goods by the estimated delivery date (if any) but cannot guarantee the delivery date. If the delay is caused by circumstances beyond our control we will not be liable to compensate you because of the delay. In these circumstances we will contact you and agree an alternative date.

If we fail to deliver the goods within 28 days of the estimated date of delivery stated in our quote you may write to us, requiring delivery of the goods within 7 days. If the goods are not delivered to you within 7 days the contract shall be cancelled. If the contract is cancelled any deposit paid by you shall be returned to you and we shall be under no further liability.

## 4. Payment.

Subject to credit being approved and unless otherwise express agreed accounts are due for payment not later than the end of the month following the month of despatch, otherwise payment must be received by the company before delivery. Where deliveries are spread over a period each consignment will be invoiced as despatched and each months invoices will be treated as a separate account and payable accordingly. Failure to pay for any goods or any delivery or installment shall entitle the company to suspend further deliveries on the same order and on other order from the customer without prejudice to any other rights the company may have. The company reserves the right in the case of failure to pay for any goods or any delivery or installment as aforesaid to suspend delivery of any order or any part or installment without liability until payment or satisfactory security for payment has been provided.

## 5. Risk and title.

a). The risk in all goods shall pass to the customer.

(i) When goods are despatched from the companies premises or

(ii) If the goods are appropriated to the customer but kept at the companies premises at the request of the customer.

(b). Notwithstanding clause a. above legal and equitable ownership of goods shall remain with the company until payment of all sums due to the company from the customer on any accounts whatsoever have been received in full.

(i). At any time prior to full payment (whether or not payment is the overdue) the company may (without prejudice to any of its other rights) retake possession of the goods or any part thereof and may enter on the customers premises by its employees or agents for that purpose.

(ii) Pending full payment for the goods the customer shall be a bailee of the goods on behalf of the company and shall store the goods in such a way that they are separate identifiable. Nevertheless prior to the time of full payment the customer is entitled to use the goods in the normal course of its business or to sell the goods to third party in the normal course of its business.

The company shall have the right to trace the proceeds of sale according to the principles in re Halletts Estate (1880) 13 CH D 696.

# TERMS & CONDITIONS

(iii) The customer rights to use the goods or to resell them prior to full payment may be terminated forthwith by written notice given by the company to the customer and shall automatically terminate with or without such notice on the appointment of any receiver or liquidator of the customer.

(iv) Each sub-clause b (i) (ii) (iii) above shall be construed and receive effect as a separate clause and accordingly in the event of any of them being for any reason whatsoever unenforceable according to its terms, the others shall remain in full force and effect.

## 6. Carriage.

The goods are sold 'ex works' and all costs of carriage and insurance shall be for the account of the customer. Delivery will be transport of the companies' choice, if the customer requests special delivery arrangements they will be charged for. Claims for any damage, shortage or partial loss in transit shall be notified in writing, by letter or facsimile to the carrier and to the company within 7 days and the carrier's conditions in relation to claims for damage, storage or partial loss in transit must be strictly complied with. Claims for total loss in transit should be notified in writing to the carrier and to the company within 7 days of receipt of invoice. If the carrier's conditions are not strictly complied with, the customer will indemnify the company against all loss resulting therefrom.

## 7. Specification.

The company reserves the right to alter the specification of any product sold by the company.

## 8. Telephone orders.

Any telephone orders must be confirmed in writing before they are accepted as official orders.

## 9. Warranty: limit of responsibility.

(i) The company warrants that goods sold will at the companies choice either be repaired or replaced if they are found within a period of 12 months from delivery ('the warranty period') to be defective or not in accordance with the contract or any expressed description or representation given or made on the company's behalf. The company will require a reasonable period of time to carry out any repairs or replacements.

(ii) Any claim the customer have under the foregoing expressed warranty or against the manufacturer or supplier as aforesaid, or any claim under any condition or warranty implied by law or any other claim in respect of the goods or workmanship in relation to goods sold be limited to repair or replacement as aforesaid and any condition or warranty implied by law shall cease to apply after the expiry date of the warranty period and in all other case shall not in any circumstances be liable for any damages, compensation, costs, expenses, losses or other liabilities whether direct or consequential and any other remedy which would otherwise be available in law hereby excluded except to the extent that such exclusion is prohibited by any rule of the law.

## 10. Applicable law.

Any contract incorporating these conditions shall in all respects be governed by and construed in accordance with English law and the customer hereby submits to the non – exclusive jurisdiction of the English courts.

## 11. REST OF THE WORLD.

In relation to goods sold outside the United Kingdom, the Channel Islands, the Isle of Man, the foregoing conditions (except conditions 5 & 6 shall apply and in addition the following conditions shall also apply). Import duties and regulation.

All import duties are the account of the customer and the customer is responsible for compliance with all import regulations and shall advise the company of any special regulations or restrictions.

**HEAD OFFICE**

**Abtech Safety Ltd  
Units 1&2 Parkway Business Centre  
Sixth Avenue  
Deeside Industrial Park  
Flintshire  
CH5 2LE  
TEL: +44 (0)1244 837 050**

**MANUFACTURING**

**Abtech Safety Ltd  
Railway Road Industrial Estate  
Darwen  
Lancashire  
BB3 3EH**

**Distributed By:**

